

From education to employment -  
Inspiring and strengthening the  
pathways to secure our nuclear future.



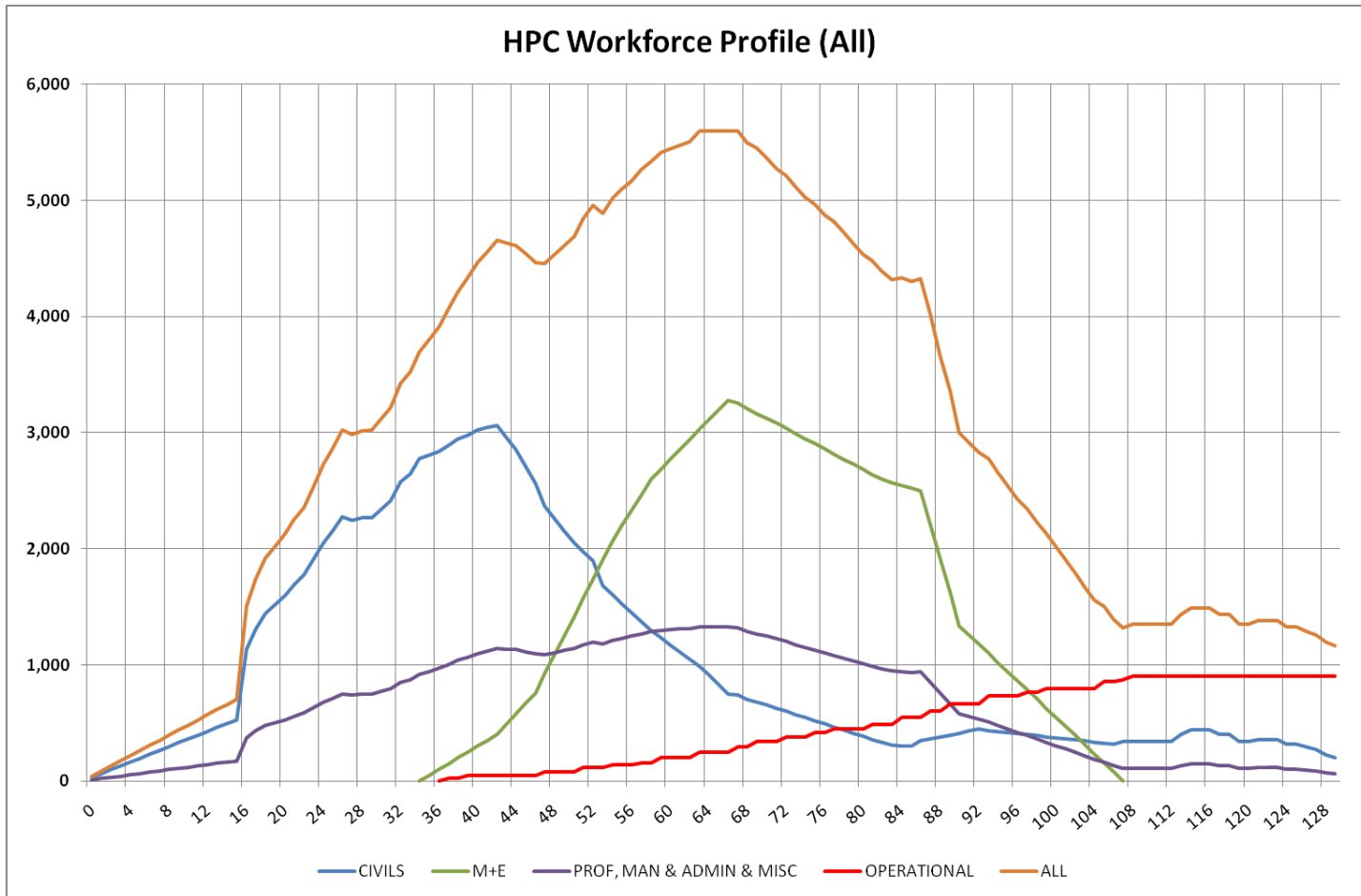
# Skills and Employment – The Opportunity

Hinkley Point C will represent one of the largest and most complex civil engineering projects in the UK on a scale of the London 2012 Olympics.

- **5,600 workers** required on site during the peak of construction.
- **400 construction apprentices** will be needed.
- Implementation of the Construction Workforce Development Strategy. Over **£6million of investment** helping to secure and sustainable jobs for local people. It includes;
  - **£5 million** investment into Bridgwater College.
    - ✓ Construction Skills and Innovation Centre
    - ✓ Energy Skills Centre
  - **£1.6 million** investment in West Somerset College.
    - ✓ Hinkley Ready
    - ✓ Hinkley Enterprise



# Workforce Profile



# A Pathway from Education, Through Training, to Employment



Education

Skills

Employment

## *Inspire Programme*

Over **35,000** students engaged to date.

WORK READY

- Apprenticeship and graduate programmes
- FE/NVQ Short Courses
- Construction Skills and Innovation Centre
- Hinkley Enterprise Project

JOB READY

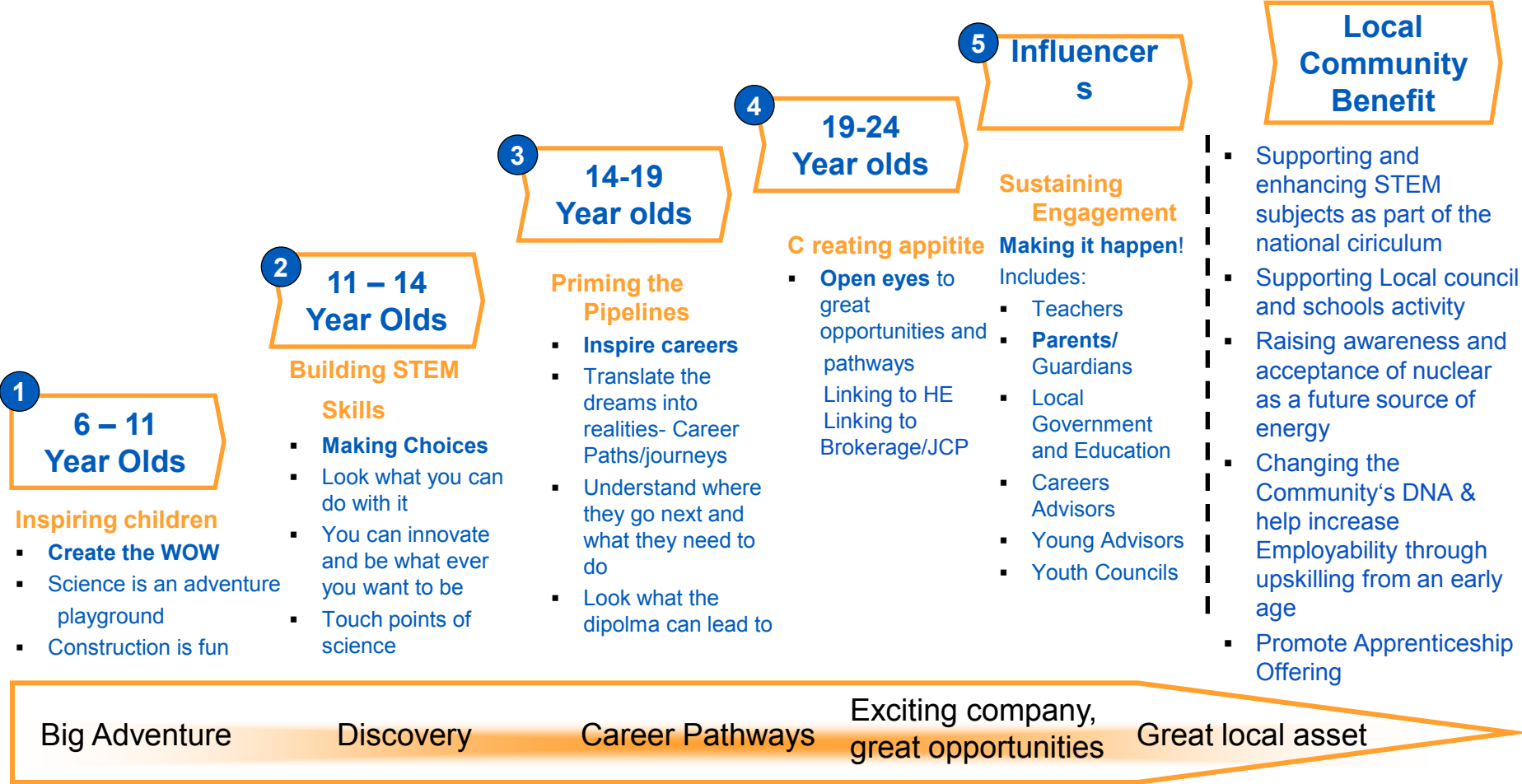
## *Sustainable Employment Opportunities*

Over **2000** now registered with the Employment Brokerage

# Inspire Education Programme



# Education : Who we are Engaging with



Changing perception and behaviours





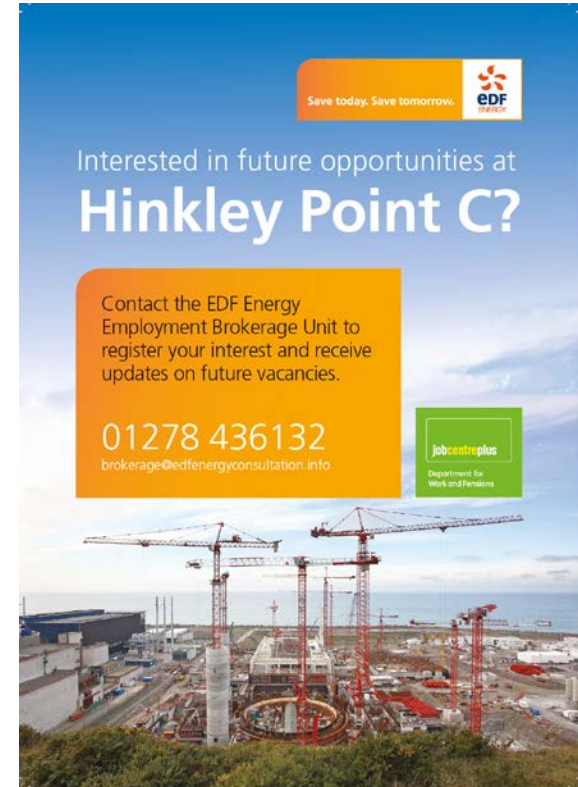
# Skill development Employment






# The HPC Employment Brokerage

- One-stop shop people looking for jobs
- Open for Business
- Where HPC contractors will advertise the jobs they have
- Provide information and support to job seekers
- Employment outreach specifically targeted to support people off benefits and back to work
- Link to skills centres to deliver short courses and demand led training
- Essential Pre training
- Employing Apprentices




Save today. Save tomorrow. 

Interested in future opportunities at  
**Hinkley Point C?**

Contact the EDF Energy  
Employment Brokerage Unit to  
register your interest and receive  
updates on future vacancies.

**01278 436132**  
brokerage@edfenergyconsultation.info

  
Department for  
Work and Pensions

The poster features a background image of the Hinkley Point C construction site with several large cranes and industrial structures under a blue sky. The text is overlaid on a blue and orange background.

# Construction Skills Centre – Bridgwater College

- Providing focussed training in line with workforce profile
- State of the Art simulated training environments
- Optimising public and private funding
- Commercial Partnership arrangements to ensure high quality courses using latest equipment and technology.
- Multiple sites in and around Bridgwater
- Planning approved for Cannington site
- Close proximity to HPC and links to Tier 1 contractors



# Apprenticeships

- Aim - to exceed national benchmarks for Apprentices in the workforce
- Demand led, reflecting demand for employment and key occupations
- Sustainable, linking with local firms and future operation at HPC
- Embedded in Education and Construction Workforce Development Strategies
- Partnering with:
  - Tier 1s and supply chain
  - West Somerset Community College
  - Bridgwater College
  - Wessex District JCP
  - Connexions



# Investing in Education, Skills and Training

- Develop demand based education and skills pipelines for both short term construction and long term nuclear needs
- Links between Education and employment need vision and courage
- Major clients and employees have to lead and collaborate with supply chain, skills bodies, and education providers to create a legacy of sustainable skills